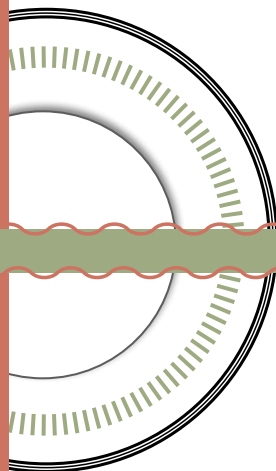


The Patternless Wardrobe Jacket

by Linda Brush



Excerpt from Linda's
class handout



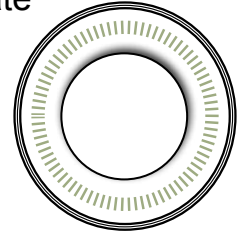
Linda Brush, Instructor
520-825-1485
sewlinda@aol.com

Introduction from Linda Brush



Thank you for joining us for the Patternless Wardrobe Class. Please come early to set up so that we can start right at 9 am. We have a whole wardrobe to make! Lunch will be on your own in the Golf Course restaurant. Please plan on buying any refreshments you want during the day from the restaurant.

This lesson plan was originally called the *Fashion Plate Wardrobe* which was based on the use of one 9-inch paper plate to use as a template for shaping and cutting all curved edges. The words “*use the plate*” will be mentioned frequently in the instructions.



Supply List

Machines: Can use either serger or sewing machine, although this process goes much faster on the serger.

- Machine
- Extension cord, foot pedals
- Machine manual
- Extra needles
- Machine cleaning supplies

Notions:

- Rotary cutter
- 24 x 36 inch cutting mat (approx.)
- 24 inch ruler
- Marking tools that show on chosen fabrics
- Scissors, pins and basic sewing tools
- Threads to match all fabrics

One 9-inch round paper plate

Suggested fabrics: Cotton is always nice and very easy to handle. It is also fun to use seersucker and chambray. Please avoid using knits for the first time, however if you prefer, stable non-stretchy knits can be used. Rayon challis is also very nice and drapery. The jacket and skirt and/or culottes can be made in one fabric and the blouse in a coordinate, if desired. There is a band down the front edges of the jacket and around the sleeves. This can be made

of the same fabric or contrast. Please try to use only 45-inch wide fabrics. The 60-inch fabric widths have a lot of waste.

Fabric Yardage:

Jacket: Most ladies like jacket lengths about even with their fingertips... just below the fullest part of the hip; a kimono line.

- Need: Two times the desired length of jacket plus 12 inches
- 1/2 yard of contrast, if desired.

Blouse: A basic shell with scooped neck

- Need: Twice desired length plus 2 inches.

***Skirt:** A basic four-gore skirt with pockets

- Need: Twice the desired length plus 6 inches.

***Culottes:** Out of rayon, they make great palazzo pants for evening and lounge wear. Otherwise, the cotton or crinkle cotton are great for travel and comfort.

- Need: Twice the desired length plus 6 inches.

***Elastic is required for Skirt or Culottes**

- 1-1/4 inch wide waistband elastic

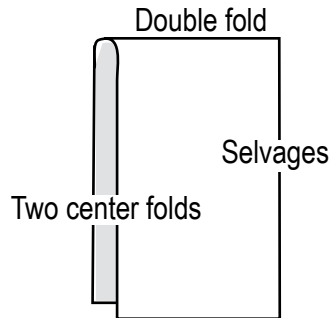
Jacket

Fabric: Two times the desired length of the jacket plus 12 inches. Add 1/2 yard of contrast, if desired.

Procedures:

1. If the jacket is all one color, cut two 4" x 45" strips first and set aside. If two colors, cut the two 4-inch strips of the contrast plus one 8-inch strip. Set aside.

2. Fold fabric back on itself so there is a double fold for the front and back, and a fold for the shoulders.

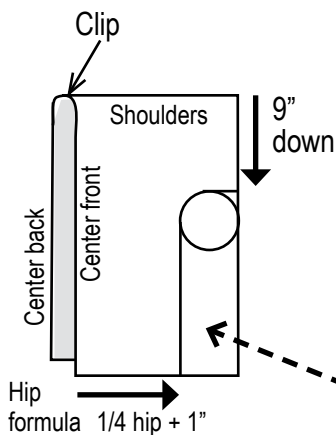


3. Measure your hips and divide by 4. Add one inch to allow for ease. From the center folds, mark this measurement with a washable marker. (Example: hips 40" divided by 4 = 10 + 1 = 11")

Your Hips _____ divided by 4 = _____ + 1 = _____ inches.

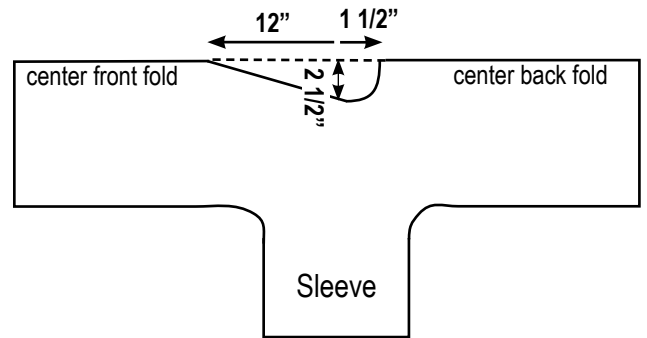
From the fold at the shoulder, measure down 9 inches at the selvage edge and mark with a washable marker.

4. Measure up from the hip mark and in from the sleeve mark. Connect these lines with a curve for the underarm (use template). Cut along this line.

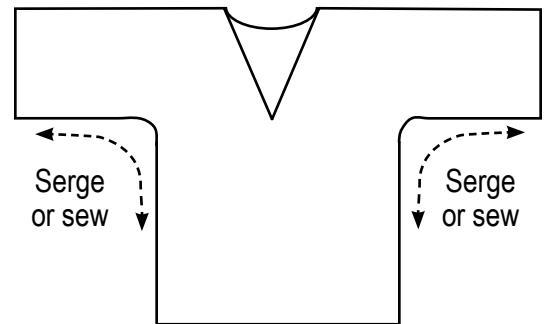


5. Clip a tiny corner off at the top of the folds to mark the center of the neckline.

Open up the shoulder fold and lay the fabric out flat. Measure down from the clip 12 inches and out from the clip 2-1/2 inches and back from the clip 1-1/2 inches to form the neckline. Connect these points and cut. Use the plate again!



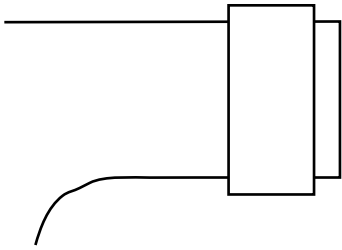
6. Open out the entire jacket and fold right sides together. Serge or sew the underarm seams. **Do not cut up the front yet!**



Sleeve Cuffs

7. Try on to check for sleeve length. About 4 inches will be added, so take off any extra now.

8. Using two of the leftover pieces from the underarm, cut two 8" x 20" pieces or do it from contrasting fabric. Use the sleeves themselves to determine the exact length for final cut.



9. After determining the correct length of the sleeve pieces, fold each in half short ways, right sides together, and serge or sew. Refold them so that the seam is inside. Pin the raw edges of the folded piece to the right side of the jacket sleeve, like you do with ribbing, matching the underarm seam and serge or sew. Repeat for other sleeve.



Above: Pleating detail on cuff adds a decorative touch.



Front Trim

10. Serge or sew around the bottom of the jacket to finish off the edge. Cut down the front on the fold.

11. Using the two pieces set aside in Step One or using a contrast, serge or sew the short end, right sides together to form a long strip. Fold the strip right sides out and press. Center the seam at the center back and pin to jacket working down each side. Turn up hems at the front 1-1/4 inches. Cut folded trim 1/4 inch longer than the finished length of the jacket, fold right sides together and serge or sew across the end. Refold right sides out and you have a finished corner.

12. Wrap the hem towards the front over the finished edge and serge or sew from the lower left side to the lower right side, securing the ends at both hems. Unfold the hem to put it back in place. Sew the hem in place with the conventional machine.



Above: Green jacket shows the addition of a designer diagonal pocket from a border print design. The jacket style allows plenty of room for customized embroidery or appliqué work.

Left: Red jacket was made of a soft cotton blend trimmed in ultra suede.